

FLANGES

612 Flanges Features:

- 7 1/8" Bore Size
- 612 Package parts in 2 3/8", 2 7/8", 3 1/2 inches
- Available in 2M, 3M, 5M, or 10M
- 2M/3M Double drilled
- Utilizes L-R slips
- Custom sizes available

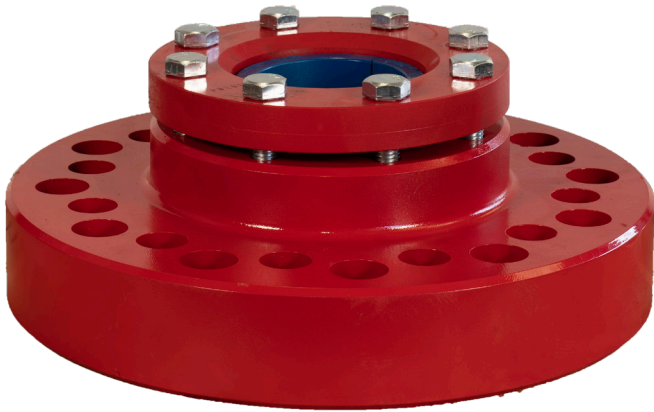


FLANGE ONLY	PART NUMBER	QTY
7 1/8" 2000 - 3000 Psi lowery slip type (612) adapter flange only	302004	1
7 1/8" 2000--3000 (6"600-900) Flange & body for (612) 3 1/2" slip type hanger flange	301971	1
7 1/8" 3000 Psi lowery slip type (612) adapter flange only	302165	1
7 1/8" 3m flange for (612) 3 1/2" slip type hanger flange	302179	1
7 1/8" 5m lowery slip type (612) adapter flange only	301995	1
7 1/8" 5m flange for (612) 3 1/2" slip type hanger flange	302074	1
7 1/8" 5m lowery slip type (612) adapter flange only with 1/2" npt port	302217	1
7 1/8" 10m lowery slip type (612) adapter flange only	301959	1
7 1/8" 10m flange for (612) 3 1/2" slip type hanger flange	302025	1
7 1/8" 10m lowery slip type (612) adapter flange only with 1/2" npt hole	302128	1

COMPLETE ASSEMBLY	PART NUMBER	QTY
7 1/8" 2M/3M PSI W / P (6" 600--- 900 #) RTJ X 2 1/2" Lowery Slip Type (612) Hanger Flange Assembly	30102426	1
7 1/8" 2M/3M PSI W / P (6" 600--- 900 #) RTJ X 2 1/2" Lowery Slip Type (612) Hanger Flange Assembly	30102423	1
7 1/8" 2M/3M PSI W / P (6" 600--- 900 #) RTJ X 3 1/2" Lowery Slip Type (612) Hanger Flange Assembly	20102417	1
7 1/8" 3M PSI W / P (900 #) RTJ X 2 3/4" Lowery Slip Type (612) Hanger Flange Assembly	30102448	1
7 1/8" 3M PSI W / P (900 #) RTJ X 2 3/4" Lowery Slip Type (612) Hanger Flange Assembly	30102447	1
7 1/8" 3M PSI W / P (900 #) RTJ X 3 1/2" Lowery Slip Type (612) Hanger Flange Assembly	30102449	1
7 1/8" 5M X 2 1/2" Lowery Slip Type (612) Adapter Flange Assembly	30102421	1
7 1/8" 5M X 2 1/2" Lowery Slip Type (612) Adapter Flange Assembly	30102420	1
7 1/8" 5M X 3 1/2" Lowery Slip Type (612) Adapter Flange Assembly	30102433	1
7 1/8" 5M X 2 1/2" Lowery Slip Type (612) Adapter Flange Assembly With 1/2" NPT Port	30102451	1
7 1/8" 10M X 2 1/2" Lowery Slip Type (612) Adapter Flange Assembly	30102418	1
7 1/8" 10M X 2 1/2" Lowery Slip Type (612) Adapter Flange Assembly	30102415	1
7 1/8" 10M X 3 1/2" Lowery Slip Type (612) Adapter Flange Assembly	30102425	1
7 1/8" 10M X 2 1/2" Lowery Slip Type (612) Adapter Flange Assembly With 1/2" NPT Hole	30102446	1

PARTS	PART NUMBER	QTY
Ring		
2 3/8" & 2 7/8"	301895	1
3 1/2"	301972	1
Top Plate		
2 3/8"	301896	1
2 7/8"	301897	1
3 1/2"	301961	1
Packing Rubber		
2 3/8"	301898	1
2 7/8"	301899	1
3 1/2"	301960	
Bottom Plate		
2 3/8"	301900	1
2 7/8"	301901	1
3 1/2"	301962	1
Slip		
2 3/8"	30102861	1
2 7/8"	30102862	1
3 1/2"	30102864	1
Bolts Grade 5		
3/4" X 2 1/4"	301902	8

FLANGES



Standard KTH Flange Features:

- 7 1/16" Bore size
- L-SW Package parts in 2 3/8", 2 7/8", 3 1/2" inches
- 2M/3M Double drilled

COMPLETE ASSEMBLY	PART NUMBER	QTY
7 1/16" 2M/3M PSI W / P (6" 600--- 900 #) RTJ X 2 3/8" Lowery Slip Type Hanger Flange Assembly	30102434	1
7 1/16" 2M/3M PSI W / P (6" 600--- 900 #) RTJ X 2 7/8" Lowery Slip Type Hanger Flange Assembly	30102435	1
7 1/16" 2M/3M PSI W / P (6" 600--- 900 #) RTJ X 3 1/2" Lowery Slip Type Hanger Flange Assembly	30102436	1

PART	PART NUMBER	QTY
Flange Only	302083	1
Ring	301360	1
Top Plate		
2 3/8"	301093	1
2 7/8"	301094	1
3 1/2"	301086	1
Packing Rubber		
2 3/8"	301096	1
2 7/8"	301097	1
3 1/2"	30152831	2
Bottom Plate		
2 3/8"	301099	1
2 7/8"	301100	1
3 1/2"	301088	1
Slip		
2 3/8"	30153407	1
2 7/8"	30153408	1
3 1/2"	30153412	1
Bolts		
3/8" X 2 1/4"	305178	8

FLANGES

B-1 Type Hanger Flange Features:

- Flange Size
- 7 1/16"
- Tubing size is 2 3/8", 2 7/8", or 3 inch thread
- Available in 2M/3M, 5M, or 10 M
- One piece, no weld
- Custom Sizes Available



DESCRIPTION	PART NUMBER
7 1/16" 2M/3M PSI Lowery Threaded Type Hgr Flange, With 2 3/8" 8 Rd Top & Bottom Thread, With R-45 Ring Joint Groove	30102437
7 1/16" 2M/3M PSI Lowery Threaded Type Hgr Flange, With 2 7/8" 8 Rd Top & Bottom Thread, With R-45 Ring Joint Groove	30102438
7 1/16" 2M/3M PSI Lowery Threaded Type Hgr Flange, With 3 1/2" 8 Rd Top & Bottom Thread, With R-45 Ring Joint Groove	30102450
7 1/16" 3M PSI W / P Lowery Threaded Type Hanger Flange, With 2 7/8" 8 Rd Eue Male Top Thread X 2 3/8" 8 Rd Eue Female Bottom Thread, With R-45 Ring Joint Groove	30102375
7 1/16" 3M PSI W / P Lowery Threaded Type Hanger Flange, With 2 7/8" 8 Rd Eue Male Top Thread X 2 7/8" 8 Rd Eue Female Bottom Thread, With R-45 Ring Joint Groove	30102376
7 1/16" 3M PSI Lowery Threaded Type Hanger Flange, With 3 1/2" 8 Rd Top & Bottom Thread, With R-45 Ring Joint Groove	30102445
7 1/16" 5M PSI W / P Lowery Threaded Type Hanger Flange, With 2 7/8" 8 Rd Eue Male Top Thread X 2 3/8" 8 Rd Eue Female Bottom Thread, With R-46 Ring Joint Groove	30102307
7 1/16" 5M PSI W / P Lowery Threaded Type Hanger Flange, With 2 7/8" 8 Rd Eue Male Top Thread X 2 7/8" 8 Rd Eue Female Bottom Thread, With R-46 Ring Joint Groove	30102282
7 1/16" 5M PSI W / P Lowery Threaded Type Hanger Flange, With 3 1/2" 8 Rd Eue Male Top Thread X 3 1/2" 8 Rd Eue Female Bottom Thread, With R-46 Ring Joint Groove	30102299
7 1/16" 5M PSI Lowery Threaded Type Hgr Flange, With 2 7/8" 8 Rd Top & Bottom Thread, With Rx-46 Ring Joint Groove, Also W/1/2" NPT Tapped Hole Top & Bottom	30102431
7 1/16" 10M PSI Lowery Threaded Type Hgr Flange, With 2 7/8" 8 Rd Top & Bottom Thread, With Bx-156 Ring Joint Groove	30102422
7 1/16" 10M PSI Lowery Threaded Type Hgr Flange, With 2 7/8" 8 Rd Top & Bottom Thread, With Bx-156 Ring Joint Groove	30102419
7 1/16" 10M PSI Lowery Threaded Type Hgr Flange, With 2 3/8" 8 Rd Top & Bottom Thread, With Bx-156 Ring Joint Groove, Also W/1/2" NPT Tapped Hole Top & Bottom	30102429
7 1/16" 10M PSI Lowery Threaded Type Hgr Flange, With 2 7/8" 8 Rd Top & Bottom Thread, With Bx-156 Ring Joint Groove, Also W/ 1/2" NPT Tapped Hole Top & Bottom	30102428
7 1/16" 15M PSI Lowery Threaded Type Hgr Flange, With 2 7/8" 8 Rd Top & Bottom Thread, With Bx-156 Ring Joint Groove	30102439
7 1/16" 15M PSI Lowery Threaded Type Hgr Flange, With 2 7/8" 8 Rd Top & Bottom Thread, With Bx-156 Ring Joint Groove	30102440

THREADED FLANGES



Drilling Flange/BOP Adapter Flange Features:

- 2M/3M Double drilled
- 5M Available
- One Piece, no weld
- API Flanges available and/or non-API flanges available (1" stand-off)

DESCRIPTION	PART NUMBER	O-RING
7 1/16" 2000- 3000# (6" 600- 900) X 6 9/16" 6 V Female RTJ Lowery B.O.P. Adapter Flange L-SW	30102270	301107
7 1/16" 2000- 3000# (6" 600- 900) X 7 5/8" 8R API Mod Female RTJ Lowery B.O.P. Adapter Flange L-K	30102303	30744
7 1/16" 5M X 7 5/8" 8 Rd API Mod Female RTJ Lowery B.O.P. Adapter Flange L-K	30102310	30744
7 1/16" 2000 - 3000# (6" 600-- 900#) X 7" 8 Rd API Female RTJ Lowery B.O.P. Adapter Flange L-HB 4 1/2" & 5 1/2"	30102297	303042
7 1/16" 2000- 3000# 6" 600-900 RTJ X 5 1/2" 8R Lowery B.O.P. Adapter Flange L-S	30102298	30957
7 1/16" 2000--3000# 6" 600--900 X 8 5/8" 8 Rd Female API RTJ Lowery B.O.P. Adapter Flange L-HB 7", L-A7 & L-SO	30102292	303052
7 1/16" 5M X 8 5/8" 8 Rd Female API RTJ Lowery B.O.P. Adapter Flange L-HB 7", L-A7 & L-SO	30102309	303052
7 1/16" 2000 -3000# 6" 600-- 900 X 8 1/4" 6 V Female RTJ Lowery B.O.P. Adapter Flange L-HW	30102253	303052
7 1/16" 2000 -3000# 6" 600--900 X 8 5/8" 8 Rd API Mod Female RTJ Lowery B.O.P. Adapter Flange L-R	30102300	303052
7 1/16" 5M X 8 5/8" 8 Rd API Mod Female RTJ Lowery B.O.P. Adapter Flange L-R	30102301	303052
11" 2000# -3000# (10" 600--900) X 10 3/4" 8 Rd API Modified Female RTJ Lowery B.O.P. Adapter Flange 8 5/8" L-92 With 1/4" Dia. O-Ring	30102259	301500
11" 2000# -3000# (10" 600--900) X 11 3/4" 8 Rd API Modified Female RTJ Lowery B.O.P. Adapter Flange 9 5/8" L-92 With 1/4" Dia. O-Ring	30102275	301726
11" 2000# -3000# (10" 600--900) X 10 3/4" 8 Rd Female API RTJ Lowery B.O.P. Adapter Flange 8 5/8" -10 1/4" L-ECA & 8 5/8" L-CJ With 1/4" Dia. O-Ring	30102276	301500
11" 2000# -3000# (10" 600--900) X 11 3/4" 8 Rd Female API RTJ Lowery B.O.P. Adapter Flange 9 5/8" -11 3/4" L-CJ With 3/16" Dia O-Ring	30102260	301575