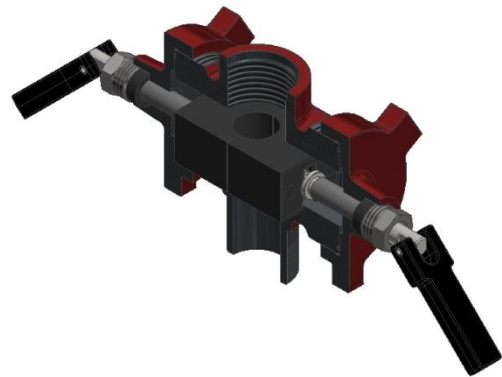

Model 150 & Model 300 Series Economy Blow-Out Preventors (BOP)

The WNS Lowery Model 150 and Model 300 Series Economy Blow-Out Preventors (BOPs) offers an economical solution quickly shutting off a well by sealing around the polished rod. The Model 150 & 300 Series BOPs have a reinforced Huber-style ram block providing a reduction in ram block extrusion. The ACME threaded end seals against O-rings in the body providing a pressure tight seal while eliminating the risk of cross threading.

Features:

- 1500 & 3000 PSI working pressure.
- Blow-Out proof ram screw and block.
- Reinforced ram block reduces extrusion.
- Full and Quick Opening
- ACME Cap and Body thread prevent cross threading.
- O-ring sealed cap ensures pressure tight seal
- Corrosion resistant materials and coatings are available
- NACE Stainless Steel optional



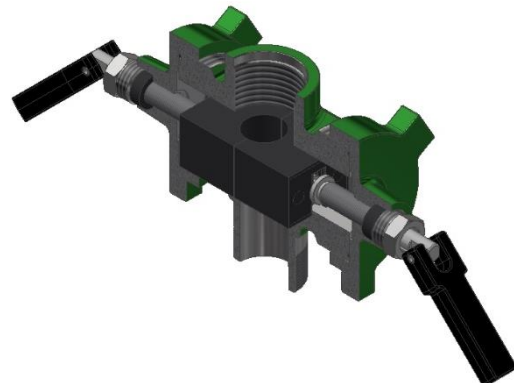
Model 150

Applications:

- Pressure Control

Processes:

- Drilling



Model 300

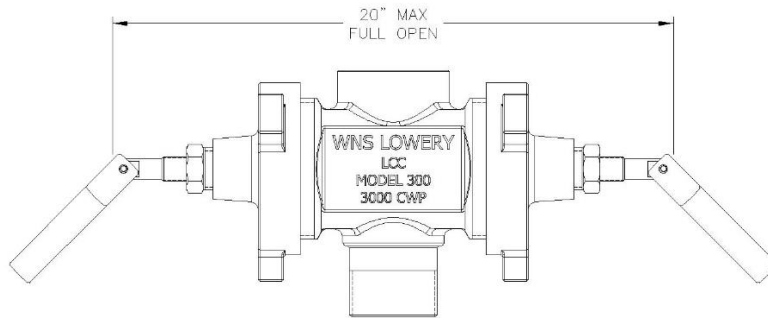


WNS Lowery
 2221 SE 69th St
 Oklahoma City, OK 73149
 (405) 677-7222

Specifications

	Model 150	Model 300
Working Pressure	1500 PSI	3000 PSI
Connection Sizes	2", 2 1/2", 3"	2", 2 1/2", 3"
Ram Sizes	Blind, 5/8"-1", 1 1/8", 1 1/4", 1 1/2", & 1 3/4"	

Dimensions



	Model 150	Model 300
Height	8.75"	8.75"
Approximate Weight	45 lb	55 lb

Materials of construction

	Model 150	Model 300
Body & Cap Material	Ductile Iron	Carbon Steel
Ram Material	Buna-N (STD), High Temperature, NACE (HSN)	
Ram Screw Material	Alloy Steel	

Installation and Maintenance

BOP Ram Setup

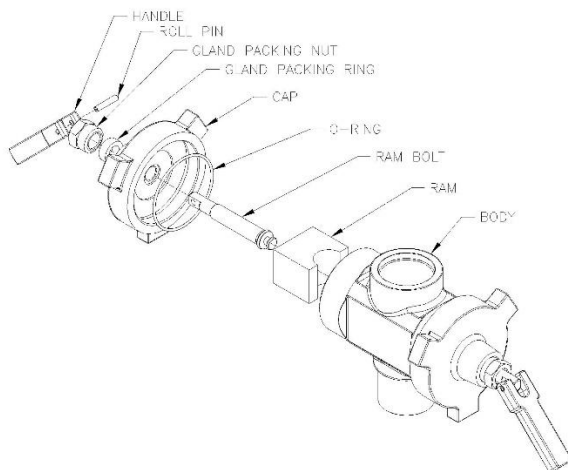
1. Rams come pre-installed in the proper flow direction as indicated by the flow arrow on the body. Rams are unidirectional and be flipped over if installation is opposite of the factory standard orientation.
 - a. Standard orientation is Pin down and Box up as indicated by the Flow direction arrow on the body.



2. All Rams are marked with a sticker that says “This Side Up”. this sticker must be facing the top of the unit for proper function.
3. Failure to properly install the rams will result in product failure.

Operation:

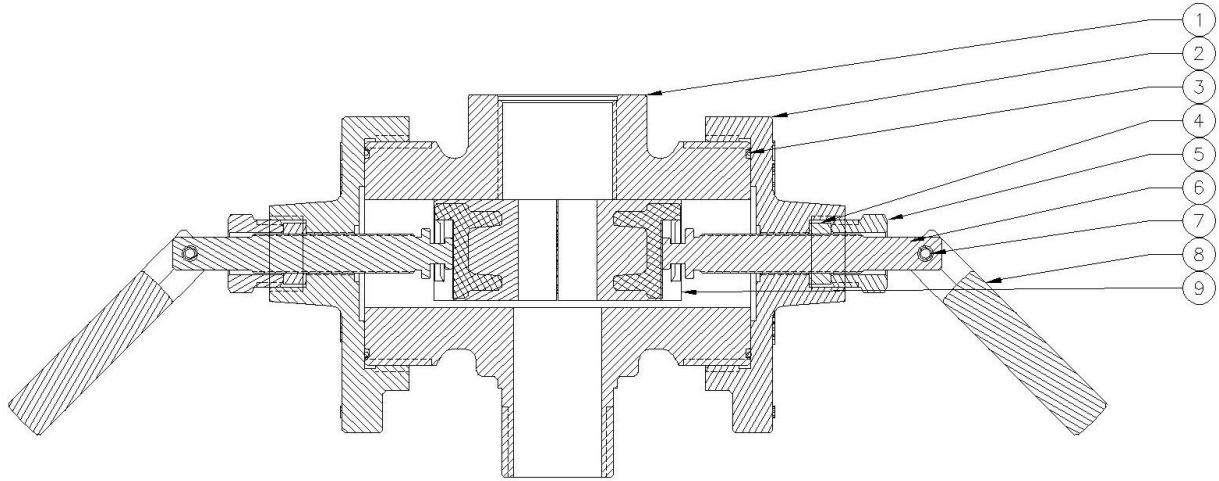
1. To close the unit, turn each handle clockwise. To ensure a proper seal is formed it is recommended to turn each handle about 4 times going back and forth between the handles to ensure even compression on the polished rod.



Maintenance:

1. While the unit is isolated, each cap can be pulled off to inspect the components.
2. All worn rubber components should be replaced at this time.

Part Numbers



	Part Number	Description	Quantity
1	100451	Model 150 Body, 2 3/8" EUE	1
	100452	Model 150 Body, 2 7/8" EUE	1
	100454	Model 150 Body, 3" NPT	1
	100471	Model 300 Body, 2 3/8" EUE	1
	100472	Model 300 Body, 2 7/8" EUE	1
	100474	Model 300 Body, 3" NPT	1
2	106615	Model 150 Cap	2
	106625	Model 300 Cap	2
3	114351	Cap O-Ring	2
4	119053	Gland Packing Ring	2
5	112711	Gland Packing Nut	2
6	119451	Ram Bolt	2
7	117320	Roll Pin	2
8	112745	Handle	2
9*	118631	Ram Set, 5/8"-1" Buna-N	1
	118632	Ram Set, 1 1/8" Buna-N	1
	118633	Ram Set, 1 1/4" Buna-N	1
	118634	Ram Set, 1 1/2" Buna-N	1
	118635	Ram Set, 1 3/4" Buna-N	1
	118636	Ram Set, Blind Buna-N	1

*not all options listed