

Polished Rod Clamps

WNS Lowery has an array of forged Finger Style (F-Style) and Boss Style (B-Style) Polished Rod Clamps. The Polished Rod Clamp is the most critical component of the wellhead stack up as it bares the weight of the rod string and acts as a connecting device to the carrier bar.

These models of clamps can only be used on piston-steel polished rods and are not capable of gripping on the spray-metal section of “hard-faced” or “hard-coated” polished rods. The B-Style Friction type and F-Style Indention type clamps are made of a high strength forged steel and precision machined to ensure a long life and proper function in the harshest of environmental conditions.

Features:

- F-Style clamps create lower stress concentrations in the polished rod
- F-Style clamps have a compact design to be used in conjunction with rod rotators
- Economical Designs
- Zinc Phosphate coating for better corrosion resistance
- Available in standard rod size

Applications:

- Artificial Lift Wellheads



Series 25
B-Style



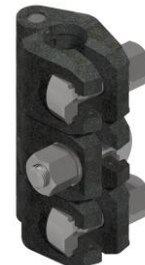
Series 40
B-Style



Series 10S
F-Style



Series 10D
F-Style



Series 10T
F-Style

*not to scale



WNS Lowery
 2221 SE 69th St
 Oklahoma City, OK 73149
 (405) 677-7222

Specifications

	Series 25	Series 40	Series 10S	Series 10D	Series 10T
Rated Load	25,000 lb	40,000 lb	13,000 lb	26,000 lb	40,000 lb
Polished Rod Sizes	1", 1 1/8", 1 1/4", 1 5/16", 1 3/8", 1 1/2", 1 3/4"				
Recommended Max Bolt Torque	250 ftlb		550 ftlb		250 ftlb
Weight	10 lb	24 lb	4 lb	8 lb	11 lb
Height	4.125"	6.75"	2.5"	5"	7.5"
Rotating Diameter	9"			5.75"	
Body Material	Forged Steel				
Nut Hex Size	1 5/8"			1 1/4"	

Installation Instructions

Caution: Rod Clamps are not capable of gripping the spray-metal section of “hard-faced” or “hard-coated” polished rods. Installation of rod clamps on the spray-metal portion of a hard-faced or hard-coated polished rod may also crack the hard-coating.

1. Thoroughly clean the polished rod clamp, nuts, bolts, and polished rod.
2. Visually inspect the nuts and bolts. Replace all nuts and bolts that are damaged, cracked, or have worn wrench flats.
 - a. Only use approved WNS Lowery nut and bolts for replacement parts.
3. Lubricate the bolt threads and the washers with a lightweight oil or grease. Do not apply the lubricant on the polished rod or the inside surfaces of the clamp as this may prevent the clamp from gripping properly.
4. Install the clamp around the polished rod and tighten the bolts until hand tight.
5. Use a straight edge to ensure that the bottom surfaces of the clamp are in a common horizontal plane. If necessary, gently tap the clamp segment up or down until the proper bottom alignment is achieved.
6. Tighten each nut as described below. A torque wrench is required to ensure proper torque:
 - a. Series 10S: Tighten the bolt to 225-250 ftlb
 - b. Series 10D: Tighten the top bolt then the bottom bolt to 225-250 ftlb
 - c. Series 10T: tighten the middle then top then bottom bolt to 225-250 ftlb
 - d. Series 25: tighten the bolt to 250-300 ftlb
 - e. Series 40:
 - i. Tighten the bottom bolt then the top bolt to approximately 300 ftlb
 - ii. Tighten each bolt by an additional 50 ftlb alternating between the bottom and top until each bolt is tightened to 500-550 ftlb
7. Ensure the bottom surfaces did not become out of alignment during the tightening of the bolts
8. Transfer the polished rod load to the carrier bar.